

Raeburn Street, Brixton, SW2

2 bedroom flat - conversion for sale

£575,000

Share of Freehold

Property Details

A tastefully decorated, split level two double bedroom flat with a private garden within a Victorian end of terraced house. Raeburn Street is a quiet residential road an equal distance to both Clapham and Brixton (nine minutes). The property is accessed via its own front door and comprises a separate reception room, two double bedrooms on different floors, a study, a modern bathroom and a contemporary kitchen with direct access onto the secluded patio garden. The layout is versatile and could be altered depending on the purchaser's search requirements. Share of freehold.

Features

- Two double bedrooms
- Victorian conversion
- Private garden
- Own front door
- Study
- Walking distance to the Northern and Victoria tube lines
- Stylish split-level maisonette
- Characterful features
- Share of freehold

Council tax band C

EPC rating E (44)



Raeburn Street, Brixton, SW2

K

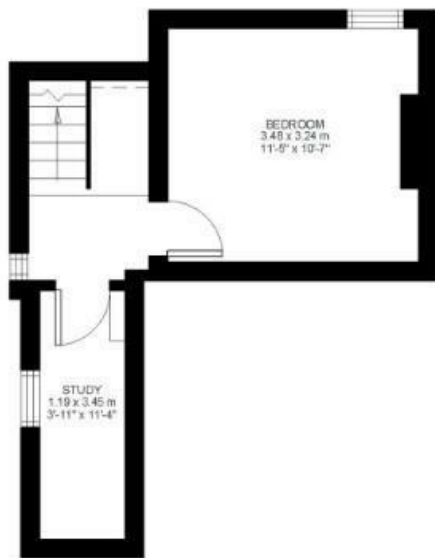
2 Bed Flat.

Approx internal area:

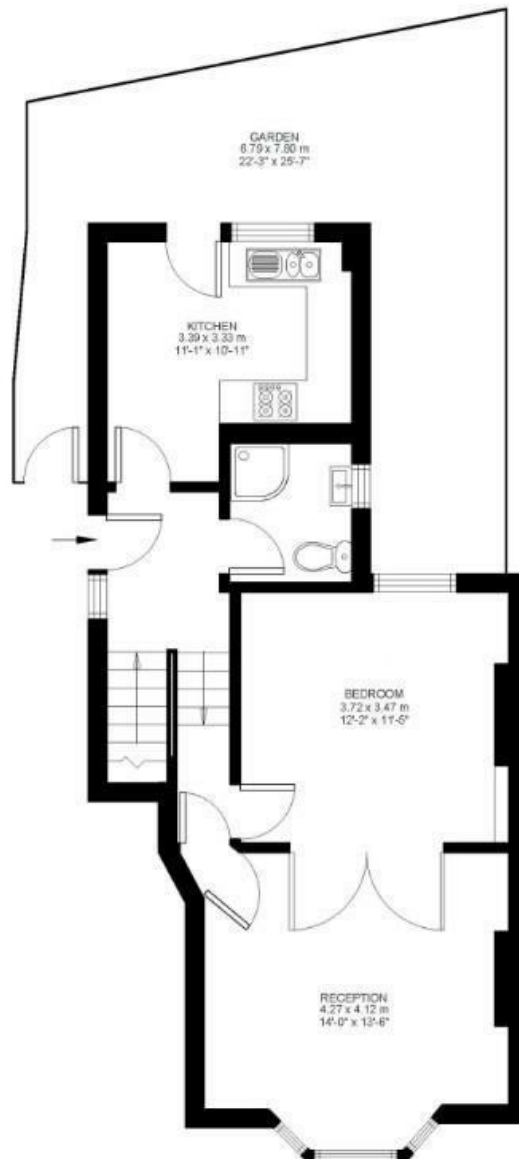
770 sqft 71 sqm

While we do try our very best, floor plans are produced as a guide only and we take no responsibility for the precise accuracy with which any property is represented

Raeburn Street



Lower Ground Floor



Ground Floor



Raeburn Street, Brixton, SW2

